



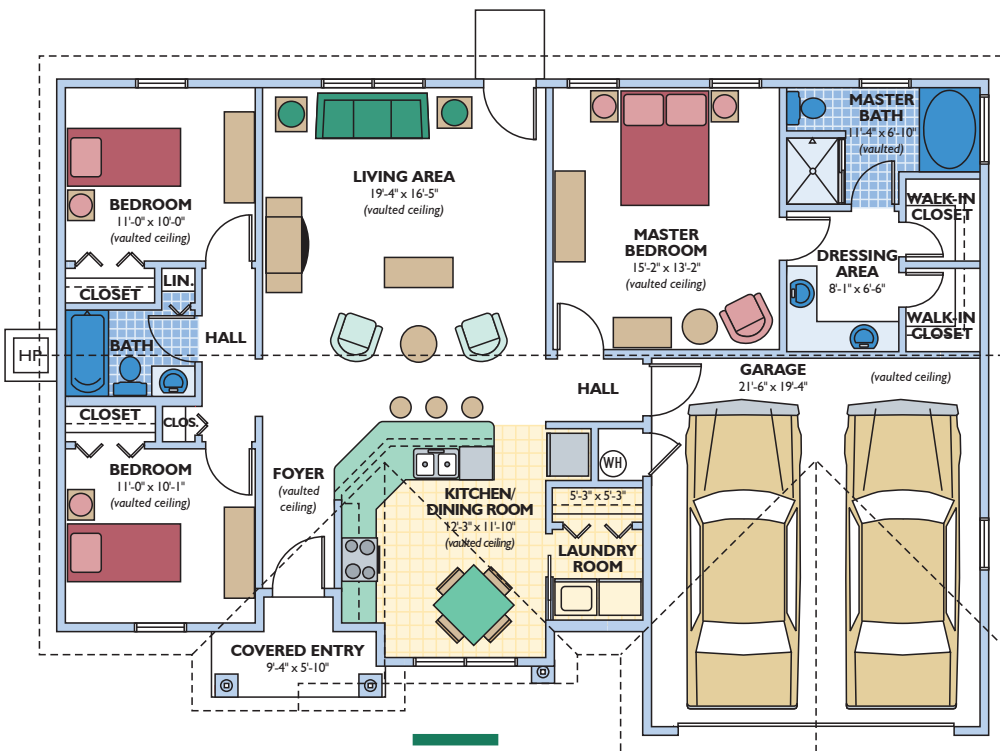
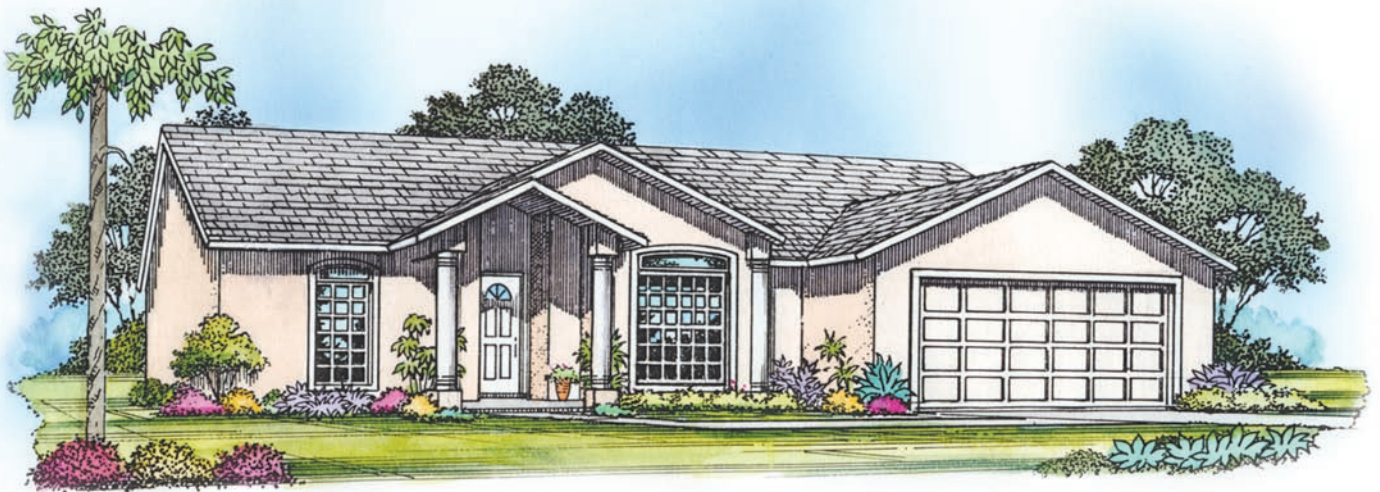
Ameron



ENERGY WISE HOMES

OVERALL DIMENSIONS

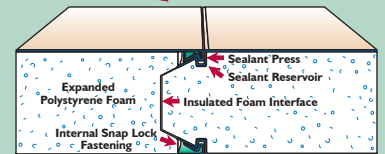
38'-0" X 54'-0"



Structall offers a complete line of precut and preengineered home and building packages utilizing structural insulated panel technology (SIPs). All packages erect quickly, are stronger than conventional framing and extremely energy efficient. SIPs can be clad in conventional OSB or in steel incorporating the patented Snap-N-Lock panel connection.

Snap-N-Lock™ Insulated Panel

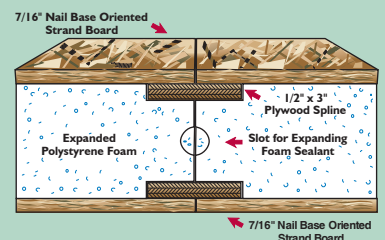
Your Choice of Aluminum or Steel Skins



Patent No.'s 4,769,963 and 5,086,599

Metal Chemically Bonded to Foam

Dual Plywood Spline Joint



The vaulted entry creates initial impact and somewhat secludes the view of the rest of the house. As you enter the living area, you'll notice its sheer size offers a lot of room for furniture options and placement. The master bedroom is also very spacious and has a dressing area.

Living Area	1,426 sq. ft.
Front cov. entry	46 sq. ft.
Garage	437 sq. ft.
TOTAL	1,909 sq. ft.

3 bedroom, 2 bath,
2 car garage



Plans and specifications are subject to change without notice. All dimensions are approximate.